



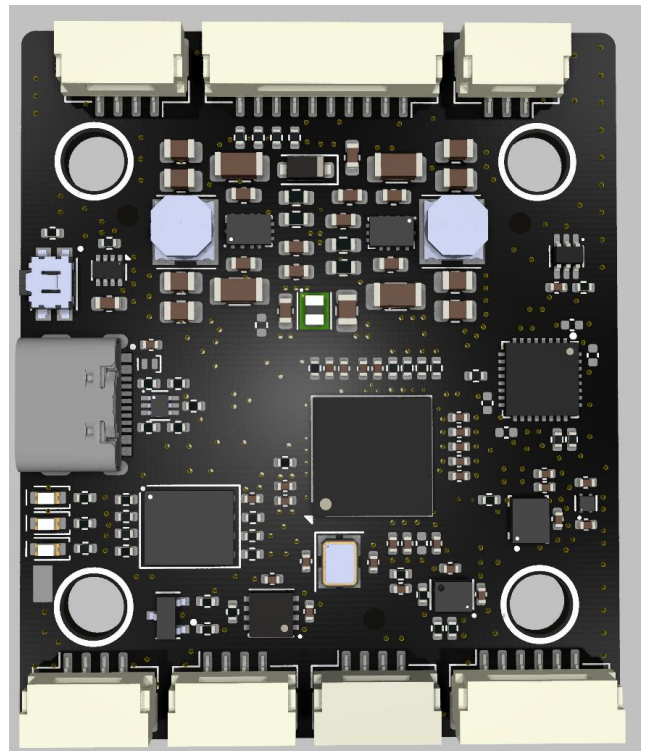
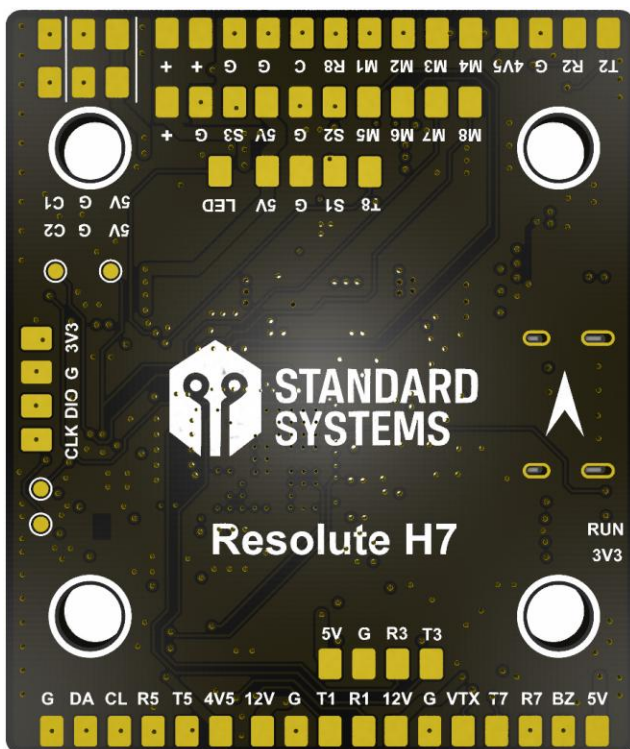
# STANDARD SYSTEMS

Info Sheet

## Resolute H7 Flight Controller

---

A robust STM32H7-based flight controller designed for long-term reliability, clean power delivery, and modular IO connectivity.



[info@standardsystems.tech](mailto:info@standardsystems.tech)

## **DESIGN INTENT**

Clean power delivery and noise isolation prioritized for sensors and RF systems  
Optimized for complex IO configurations and system-level integration  
Designed for reliable, high performance attritable drone systems

## **FIRMWARE & SENSORS**

- Firmware: Betaflight / Ardupilot / PX4
- STM32H743 MCU
- 16Mb onboard flash memory
- ICM 42688P IMU
- DPS368 Barometer

## **POWER**

- Independent 12V/3A and 5V/3A rails designed for continuous operation of peripherals under load
- 3.3V/2A Sensor Power for reliable operation in extreme environments
- Dedicated ultra low noise voltage regulator for the IMU
- Excellent thermal management for reliability in extreme conditions
- Ability to disable / blackout all onboard status and power LEDs
- TVS diode protects against harmful voltage spikes
- USB power support for GPS and RX

## **INPUT / OUTPUT / VIDEO**

- Dual analog camera inputs with camera (CAM1/CAM2) switcher (PINIO 2)
- VTX power (on/off) switch function (PINIO 1)
- Native analog OSD support
- Solder pads and JST GH connectors for IO interface
- 6 x Full UARTS
- 1 x I2C (supports barometer and magnetometer)
- 8 motor PWM channels, 3 Servo PWM channels, LED Strip PWM channel

## **PHYSICAL**

- Weight: 14.3g
- Size: 50mm x 43mm
- 30.5mm x 30.5mm, M3 mounting with silicon grommets